

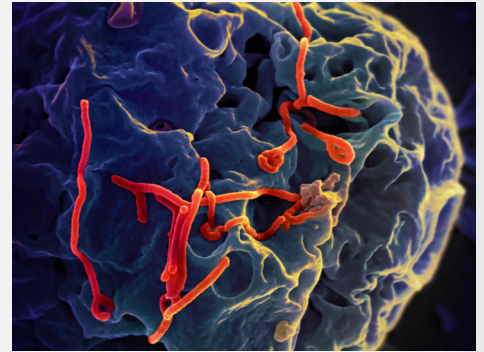
MBI Educations Programs

2016 Summer School: Mathematical Modeling of Infection Disease Spread

June 13 - 22, 2016

Graduate Students from the mathematical and life sciences, public health, and related fields are encouraged to apply. Participants will receive broad high-level training in mathematical biology that is unattainable at most institutions.

The summer school will focus on the mathematical modeling of infectious diseases, a field that is growing in importance because of the many issues surrounding newly emerging diseases (e.g. SARS, Ebola, West Nile virus), and because of new data sources now available in the study of disease transmission, pathogen evolution, and the impact of the social behavior of hosts.



Organizing Committee:

- **Jane Heffernan** (York, Math and Stats, CDM)
- **Pauline van den Driessche** (Victoria, Math and Stats, CDM)
- **Suzanne Lenhart** (NIMBioS and Tennessee, Math)
- **Joe Tien** (Ohio State, Math and College of Public Health)
- **James Watmough** (New Brunswick, Math and Stats, CDM)

Co-Sponsors:

- **Mathematical Biosciences Institute (MBI)**
- **National Institute for Mathematical and Biological Synthesis (NIMBioS)**
- **Fields Institute**
- **Centre for Disease Modelling (CDM)**
- **Centre for Applied Mathematics in Biosciences and Medicine (CRM)**
- **Society for Mathematical Biology (SMB)**

Application information coming soon at mbi.osu.edu/education/



MBI receives major funding from the National Sciences Foundation Division of Mathematical Sciences and is supported by The Ohio State University. MBI adheres to the AA/EOE guidelines.



go.osu.edu/facebook_mbi_osu



go.osu.edu/twitter_mbi_osu



go.osu.edu/linkedin_mbi_osu